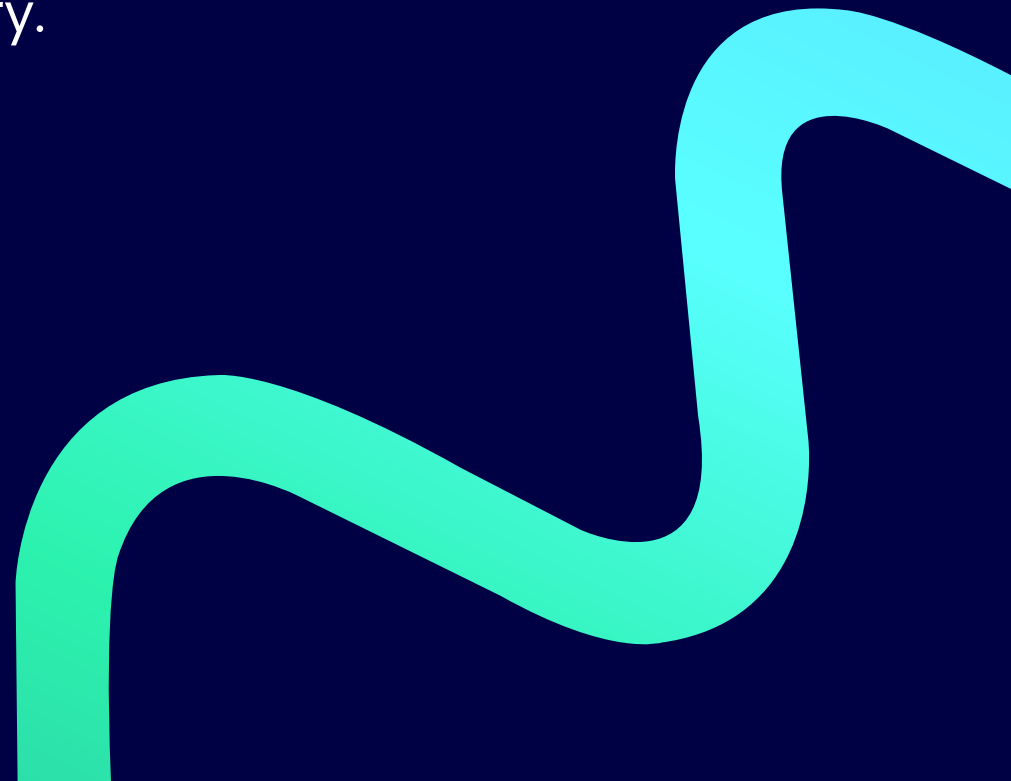




Understanding your basic meter data report.

Our guide to reading your NEM13 summary.



The basic meter data report

Your meter data report follows a standard industry format that all power companies stick to. This guide explains how the report is set up, to help you find the information you're looking for.

The basic meter data report is a summary of your overall energy use and has two parts: the data table, and the energy flows graph.

The information in your meter data report may look slightly different from what's shown in this guide (for example, if you have solar).

Each meter data report is for a single National Meter Identifier (NMI). If you have more than one NMI, you'll need to request separate reports for each one.

Data table

Your NMI (or National Metering Identifier) is your electricity connection point and is unique to your property

These amounts are how much electricity was used (in kilowatt hours) in the period between the dates

A controlled load could be something like hot water which heats at times controlled by your distributor

This number is how much electricity was generated in the period between the dates, such as any solar energy you've exported to the electricity grid.

A	B	C	D	E	F	G	H	I
NMI	Meter Serial Number	Unit of Measure	From Date	To Date	General Supply	Controlled Load	Generation	Includes Estimates
10012345678	85432	kWh	03/06/2024	03/09/2024	0	360	0	N
10012345678	94480	kWh	03/06/2024	03/09/2024	570	0	0	N
10012345678	85432	kWh	03/09/2024	04/12/2024	0	2630	0	N
10012345678	94480	kWh	03/09/2024	04/12/2024	3910	0	0	N
10012345678	85432	kWh	04/12/2024	06/03/2025	0	620	0	N

Each meter on your property will have it's own serial number. You may have more than one meter, as shown here

These dates are when the meter was read (or estimated)

This column shows if each read is based on actual data (N) or if the data has been estimated (Y)

Sometimes your meter service provider isn't able to get a meter read (for example a locked gate or other access issue). If this is the case, the meter service provider will supply an estimated read

Energy Flows Graph

This graph shows a visual summary of the information from the data table.

